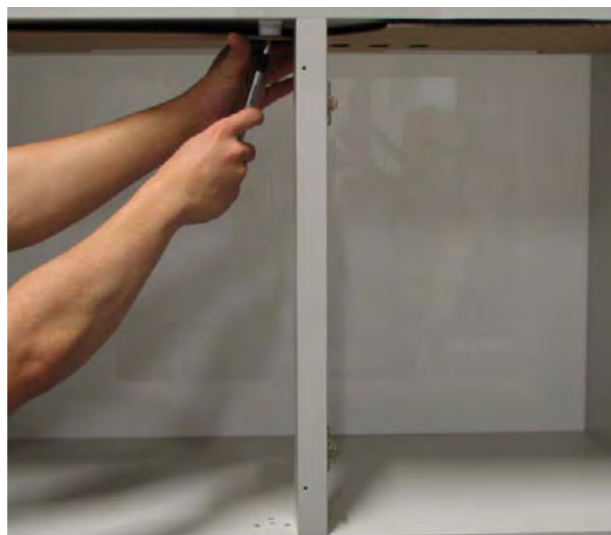
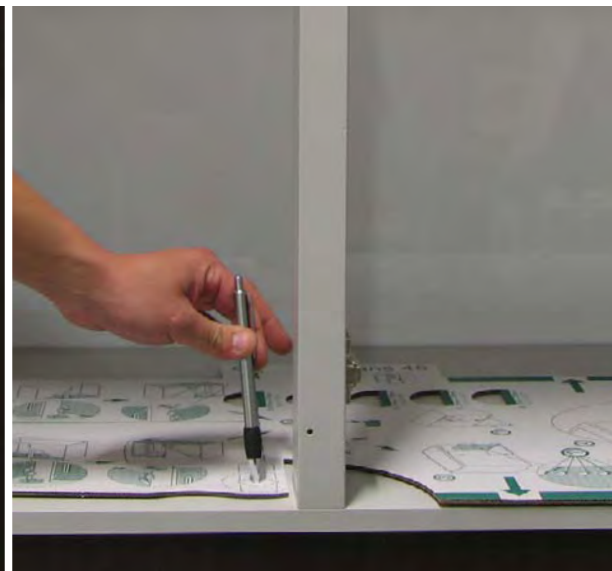




■ Package contents



## ■ Installation



- Drilling holes for the support frame



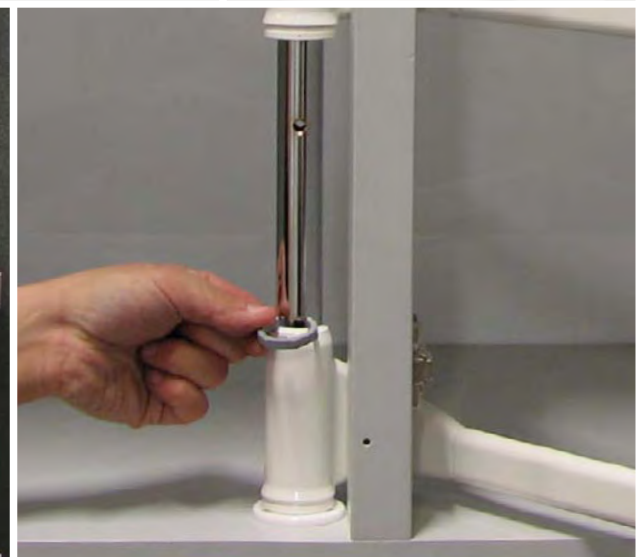
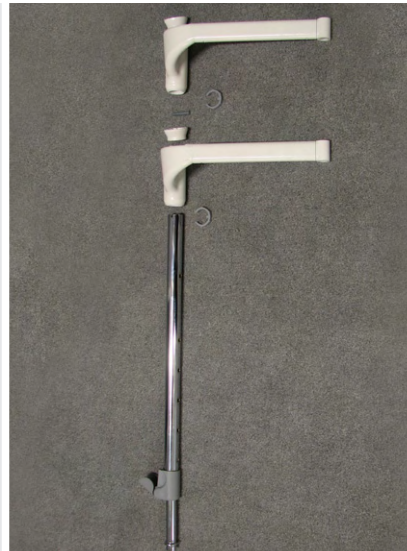
- Screwing on the support arms



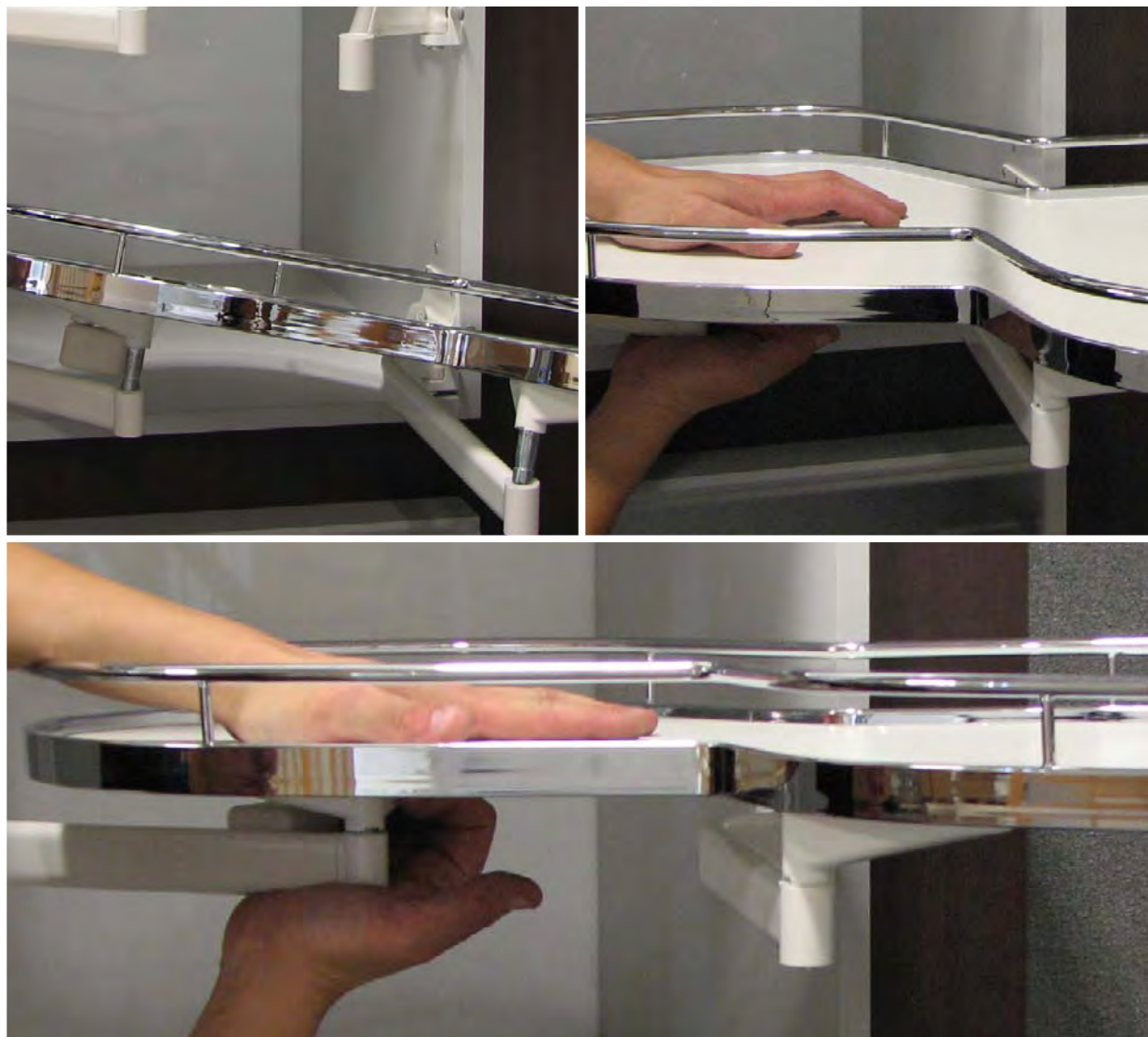
■ Installing the axle



■ Installing the axle

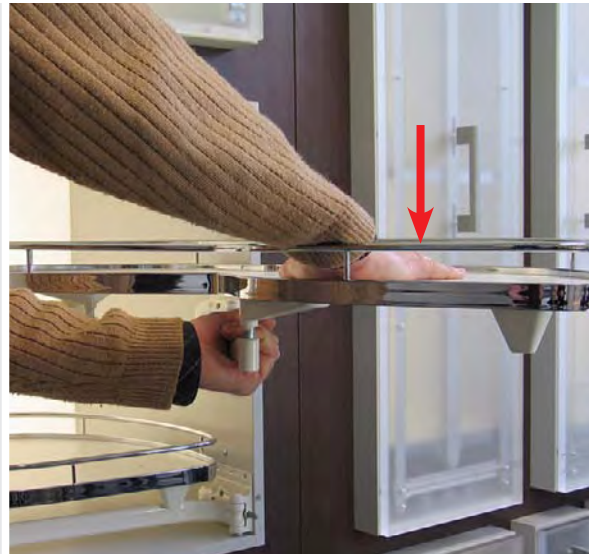


■ Installing the trays





## ■ Installing the trays



**Note:**  
Alternatively swing right...

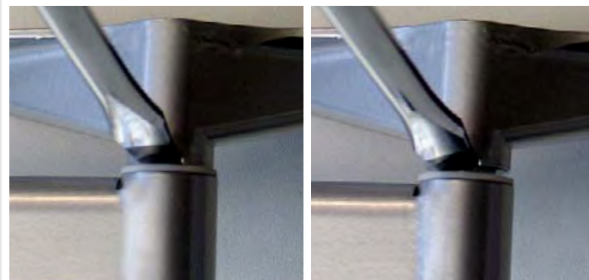
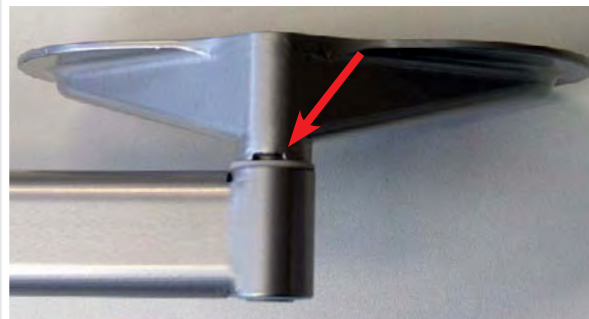


...and left.

- Modify the swing-out angle



■ Removing the trays



■ Removing the trays

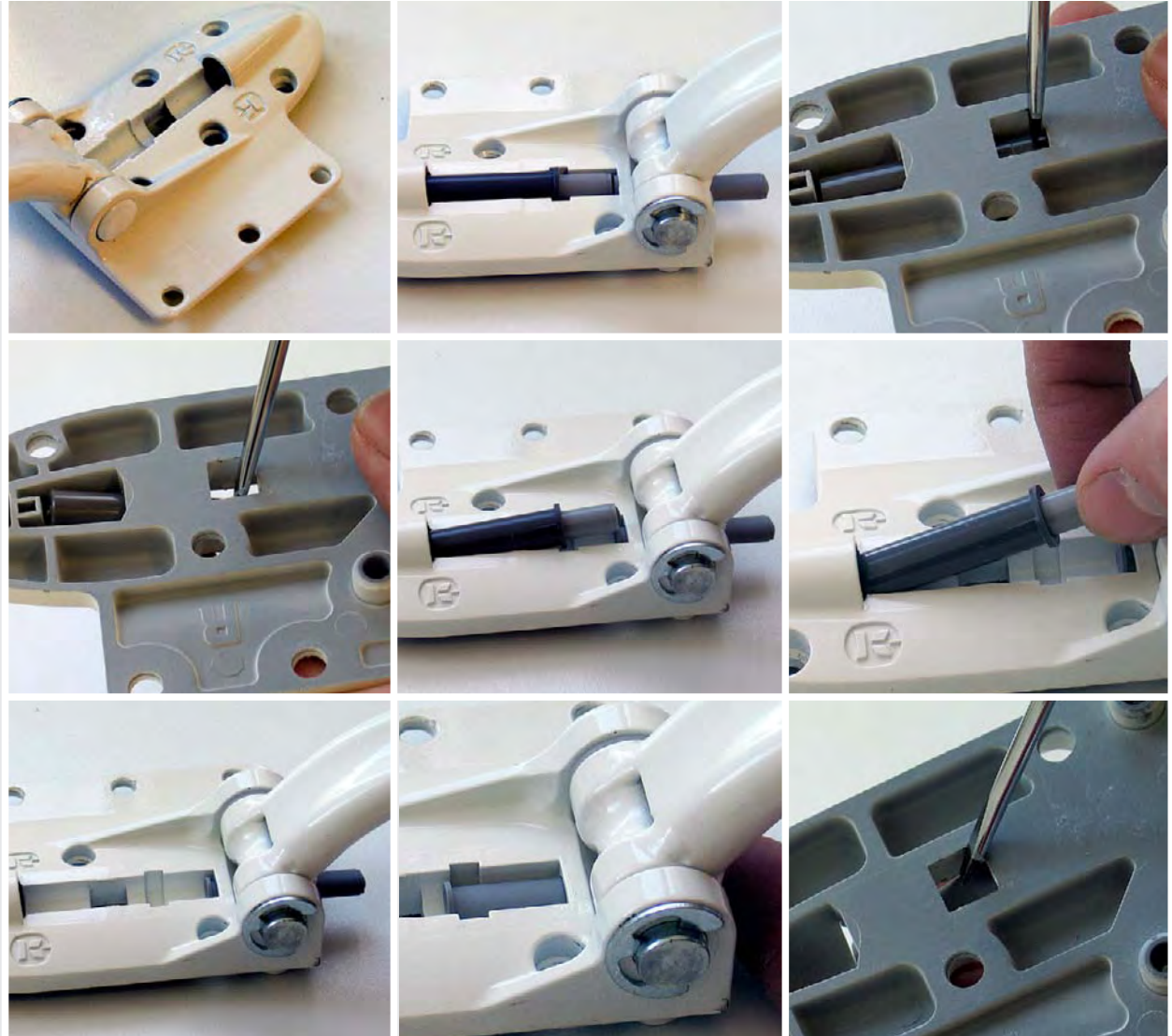


**Note:**  
Alternatively lever up right...



...and left.

■ Inserting or replacing the front dampers



- Inserting or replacing the front dampers

